

Application:	Service penetrations - plastic SWD systems
Fire resistance period:	120minutes, depending upon the application
Insulation/integrity:	Insulation and integrity
Test standard(s):	EN 1366-3
Approval Type:	CE Mark 2812-CPR-EA5002

## CE Marked Pyroplex® 200 Series SL Pipe Collar



Pyroplex® 200 Series SL Pipe Collars have been specifically designed to reinstate the fire resistance of a wall or floor which has been penetrated by plastic flammable pipes used in soil, waste and drainage services. The collars will seal closed flammable pipes from a 50mm to 160mm diameter and can be face fixed to a wall or ceiling structure suitable for use on concrete, masonry and plasterboard partitions. Tested in accordance with EN1366-3, achieving a fire resistance period of up to 120 minutes (depending upon the application), classified in accordance with EN13501-2: 2007, classification report No. 412471. ETA is issued in accordance with (EU)No.305/2011 based upon EAD350454-00-1104 - ETA 20/1207

### TYPICAL INSTALLATION

- wall application  
Masonry wall construction



### FIELD OF APPLICATION

Pyroplex® 200 Series SL Pipe Collars have been specifically designed to prevent the passage of fire and hot gases through:

- Concrete and masonry constructions -  
Suitable for plasterboard partitions 50mm to 160mm
- Soil, waste and drainage 'above ground' applications
- Suitable for plastic flammable pipes with PVC-C, PVC-U, PE, PP, ABS and SAN+PVC pipes

### PRODUCT FEATURES

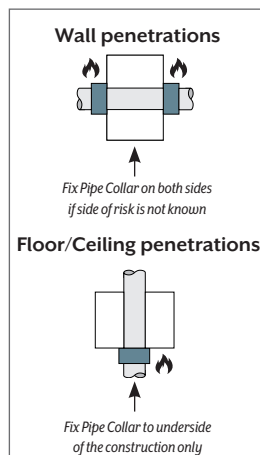
- Pyroplex® 200 Series SL Pipe Collars have achieved a fire resistance of up to 120 minutes
- Pyroplex® 200 Series SL Pipe Collars have a zintec coated steel outer casing
- Embossed for identification and traceability purposes
- Tab closing device means the collars are easy to fix in place around the pipe and rotate or slide into position
- Intumescent material is totally unaffected by water, is robust, 'non-flaking' and difficult to tear

### INSTALLATION INSTRUCTIONS

#### Masonry Wall and Floor Constructions

Further information on the general supporting construction, pipe diameters and pipe wall thicknesses can be referenced in the Declaration of Performance available for a download from [www.pyroplex.com](http://www.pyroplex.com)

1. Ensure the substrate around the pipe is flat and free from obstructions – if necessary make good by using Pyroplex® CE Intumescent Acrylic Sealant around the perimeter.
2. Release the retaining pin and position the pipe collar around the pipe.
3. Slide the tab through the slot in the pipe collar and fold back 180° to secure.
4. Secure the pipe collar by drilling holes in the



structure by using fixing lugs as a template.

To fix, use metal sleeve anchor M6 x 65s or CE marked alternative anchors.

**Do not use plastic raw plugs and/or plastic sleeve anchors.**

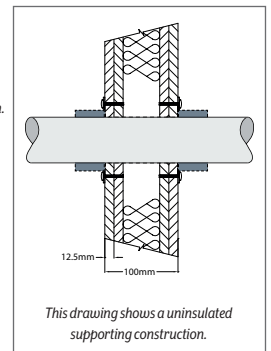
5. When the collar has been securely fitted into place, any residual gaps between the collar and the substrate can be filled using Pyroplex® CE Intumescent Acrylic Sealant.

### INSTALLATION INSTRUCTIONS

#### Flexible Partition Walls

Flexible partitions - fully insulated or insulated partitions. Refer to Declaration of Performance which define the field of application for the supporting construction.

1. Ensure the substrate around the pipe is flat and free from obstructions – if necessary, make good by using Pyroplex® CE Intumescent Acrylic Sealant around the perimeter.
2. Release the retaining pin and position the pipe collar around the pipe.
3. Slide the tab through the slot in the pipe collar and fold back 180° to secure.
4. Secure the pipe collar by drilling holes in the structure and using fixing lugs as a template. To fix, use Fishcer HM 6 x 65s or CE marked alternative anchors.
5. When the collar has been securely fitted into place, any residual gaps between the collar and the substrate can be filled using Pyroplex® CE Intumescent Acrylic Sealant.



### QUALITY APPROVAL

Pyroplex Limited have a Quality Management System that meets the requirements of ISO 9001 and an Environmental Management System that meets the requirements of ISO 14001, both are independently verified by BSI Quality Assurance under Certificate Numbers FM 10371 and EMS 637894. Copies of these certificates are available on our website to download at [www.pyroplex.com](http://www.pyroplex.com).

## TECHNICAL DATA:

### FIELD OF APPLICATION

Table 1 - UPVC pipe – Flexible and Rigid Wall [100mm minimum thickness] Pyroplex 200 Series SL Pipe Collars to be installed both sides of the supporting construction			
Pipe Diameter (mm)	Pipe thickness (mm)	Collar Type	Classification
50	2.4 - 3.70	PPC52-2SL	E 120 – U/C EI 90 – U/C
75	3.20 - 4.90	PPC75-2SL	
82	3.40 - 5.20	PPC82-2SL	
110	4.20 - 6.60	PPC110-2SL	
160	6.20 - 9.50	PPC160-2SL	EI120 – U/C

Table 2 - Polypropylene pipes – Flexible and Rigid Wall [100mm minimum thickness] Pyroplex 200 Series SL Pipe Collars to be installed both sides of the supporting construction			
Pipe Diameter (mm)	Pipe thickness (mm)	Collar Type	Classification
50	2 - 6.90	PPC52-2SL	EI60 – U/C E 120 – U/C
75	3.20 - 10.30	PPC75-2SL	
82	2.40 - 11.30	PPC82-2SL	
110	2.70 - 15.10	PPC110-2SL	
160	4.00 - 21.90	PPC160-2SL	EI90 – U/C E 120 – U/C

Table 3 - Polyethylene pipes – Flexible and Rigid Wall [100mm minimum thickness] Pyroplex 200 Series SL Pipe Collars to be installed both sides of the supporting construction			
Pipe Diameter (mm)	Pipe thickness (mm)	Collar Type	Classification
50	3.00 - 4.60	PPC52-2SL	E 120 – U/C EI90 – U/C
75	2.90 - 6.90	PPC75-2SL	
82	2.40 - 11.30	PPC82-2SL	
110	2.80 - 7.50	PPC110-2SL	
160	4.00 - 14.60	PPC160-2SL	EI120 – U/C

Table 4 - UPVC pipe – Rigid Floor 150mm minimum thickness] Pyroplex 200 Series SL Pipe Collars to be installed to the underside of the supporting construction			
Pipe Diameter (mm)	Pipe thickness (mm)	Collar Type	Classification
50	2.4 - 3.70	PPC52-2SL	EI120 – U/C
75	3.20 - 4.90	PPC75-2SL	
82	3.40 - 5.20	PPC82-2SL	
110	4.20 - 6.60	PPC110-2SL	
160	6.20 - 9.50	PPC160-2SL	EI 120 – U/C

Table 5 - Polypropylene pipes – Rigid Floor 150mm minimum thickness] Pyroplex 200 Series SL Pipe Collars to be installed to the underside of the supporting construction			
Pipe Diameter (mm)	Pipe thickness (mm)	Collar Type	Classification
50	2 - 6.90	PPC52-2SL	EI120 – U/C
75	3.20 - 10.30	PPC75-2SL	
82	2.40 - 11.30	PPC82-2SL	
110	2.70 - 15.10	PPC110-2SL	
160	4.00 - 21.90	PPC160-2SL	EI120 – U/C

Table 6 - Polyethylene pipes – Rigid Floor 150mm minimum thickness] Pyroplex 200 Series SL Pipe Collars to be installed to the underside of the supporting construction			
Pipe Diameter (mm)	Pipe thickness (mm)	Collar Type	Classification
50	3.00 - 4.60	PPC52-2SL	EI120 – U/C
75	2.90 - 6.90	PPC75-2SL	
82	2.40 - 11.30	PPC82-2SL	
110	2.80 - 7.50	PPC110-2SL	
160	4.00 - 14.60	PPC160-2SL	EI90 – U/C

## TECHNICAL DATA:

### PRODUCT RANGE

Pyroplex 200 Series SL Collars				
Part No.	Pipe Ø [mm]	Collar Depth [mm]	No. of Fixing Lugs	Product Quantity per pack
PPC55-SL	55	30	3	100
PPC75-SL	75	30	4	75
PPC82-SL	82	30	4	75
PPC110-SL	110	30	5	50
PPC160-SL	160	45	6	16

### OTHER INFORMATION

The information contained herein is based upon the present state of our knowledge. Recipients of Pyroplex® products must take responsibility for observing existing laws and regulations. Due to our policy of continuous improvement, Pyroplex Limited reserves the right to amend specifications without prior notice.

#### FURTHER GUIDANCE [SUPPORTING CONSTRUCTIONS]

Given the wide variety of supporting construction, further guidance given in ASFP Advisory guidancenote I5. ASFP Position on the interchangeability of supporting construction for firestopping. [www.asfp.org.uk](http://www.asfp.org.uk)

**Limitations of use:** Should not be used for SWD pipes penetrating a timber floor or ceiling : consult with the appointed/competent person for further guidance.

## TECHNICAL DATA:

### PRODUCT TESTING

Pyroplex Limited have carried out numerous independent fire resistance tests

to confirm the suitability of the product and to demonstrate product compliance by utilising EN 1366-3. EN Classification report 412471 is available on request.

### MAINTENANCE AND INSTALLATION RECORDS

Since the product is not subject to routine and replacement programmes, Pyroplex Limited recommend that all firestopping materials are checked on a regular basis to ensure that the product remains integral. Replace and fit any damaged components to reinstate the fire resistance of the wall or floor.

### PRODUCT GUARANTEE AND TRACEABILITY

Providing the product is installed in accordance with the requirements of the guidance document, the product is guaranteed for a period of 10 years.

### TECHNICAL SUPPORT AND GUIDANCE

Should you require any further information regarding this product, please contact Pyroplex Limited or visit our website, [www.pyroplex.com](http://www.pyroplex.com)

## MATERIAL SAFETY DATA:

### COMPOSITION/INFORMATION ON INGREDIENTS

**Chemical nature:** Thermoplastic element composition containing intercalated graphite in a synthetic compound with the addition of fillers and process oils. Presented in a 'steel' outer casing to form the final product.

### POSSIBLE HAZARDS

**Principle hazards:** Not subject to decree of hazardous substances.

**Critical hazard to man and environment:** Not applicable.

### FIRST AID MEASURES

**On skin contact:** Wash thoroughly with soap and water.

**On contact with eyes:** Wash for at least 15 minutes under running water with eyelids held open, consult an eye specialist.

**On ingestion:** Rinse mouth immediately, do not induce vomiting, and seek immediate medical attention.

**If inhaled:** Not applicable in solid state.

### FIRE FIGHTING MEASURES

Pyroplex® intumescent material is self-extinguishing.

**Suitable extinguishing media:** Water, foam, powders and dry extinguishing media.

**Special protective equipment:** Suitable forms of PPE [personal protective equipment]. Avoid inhalation of smoke or fumes. In the event of fire, contact the appropriate emergency services for assistance.

### ACCIDENTAL RELEASE MEASURES

**Personal precaution:** In the event of fire ensure sufficient ventilation.

**Environmental precaution:** Ensure materials are disposed of in accordance with local authority regulations and/or government legislation.

**Methods for cleaning up:** No special measures necessary.

### HANDLING AND STORAGE

**Handling:** No special requirements.

**Storage:** Store in a dry and cool place [not above +35°C]. Keep out of reach of children. Take care for sufficient ventilation.

### EXPOSURE CONTROLS AND PERSONAL PROTECTION

**Respiratory protection:** None normally required when supplied in solid form. Drilling creates a dust hazard.

**Hand protection:** None normally required.

**Eye protection:** None normally required.

**Skin protection:** None normally required.

### PHYSICAL AND CHEMICAL PROPERTIES

Form	Solid
Colour	Black
Odour	Acidic
Explosion limits	None

### STABILITY AND REACTIVITY

**Conditions to be avoided:** Thermal decomposition above +300°C.

**Hazardous decomposition products:** Thermal decomposition, fumes contain Hydrogen Chloride. However, the activated graphite is effective at removing aromatic particles from smoke emissions.

### TOXICOLOGICAL INFORMATION

**Acute toxicity:** Not applicable in solid state.

### ECOLOGICAL INFORMATION

**General advice:** Observe the legal provisions regarding the prevention of ground water and surface water as well as air.

### DISPOSAL CONSIDERATIONS

**Product packaging:** Refer to local authority regulations.

**Recommendations:** Disposal of by special means in accordance with local regulations e.g. suitable deposition.

**Contaminated packaging recommendation:** Not applicable.

### TRANSPORT INFORMATION

**Transport hazards:** No regulations apply for the transport of this material. Not classified as hazardous for road, rail, sea or air transport.

### REGULATORY INFORMATION

Labelling according to EEC directives	
National legislation/regulation	Not applicable
VbF classifications	None
Water hazard class	Not applicable