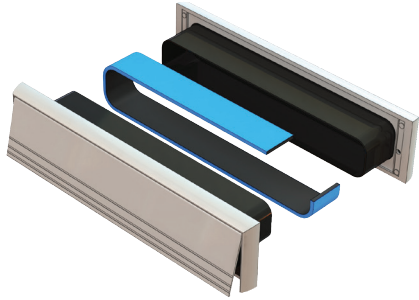


FIREMASTER P207

LETTERPLATE

FITTING GUIDE

certifire
(CF291)



INSTALLATION DETAIL

STEP 1

Mark off aperture position for the letterplate at a minimum of 250mm and a maximum of 1700mm from the base of the door. Dimension from middle of aperture.

STEP 2

Cut out aperture with jig saw or router etc, to suit letterplate sleeve.

NOTE

This must be a push fit on all sides of sleeve.

STEP 3

Fix letterplate using fixing screws supplied, with the brushes under the internal flap, on the inside of the room.



V2

 **LORIENT**
ASSA ABLOY

ASSA ABLOY LTD T/A LORIENT
Endeavour House
Fairfax Road
Heathfield Ind Estate
Newton Abbot
Devon TQ12 6UD
United Kingdom

+44 (0)1626 834252
www.lorientgroup.com

All rights reserved. No part of this fitting guide may be reproduced, stored in a retrieval system, or transmitted in any means, electronic, mechanical, photocopying, recording or otherwise without the written permission of Lorient.

© 2024 ASSA ABLOY Ltd T/A Lorient. Lorient is a registered trade mark of ASSA ABLOY LIMITED in England.

For more information please call:

+44 (0)1626 834252