

Quelfire QWR CE Marked Fire Collars prevent the spread of fire where PVC, HDPE & PP pipes penetrate fire compartment walls and floors.



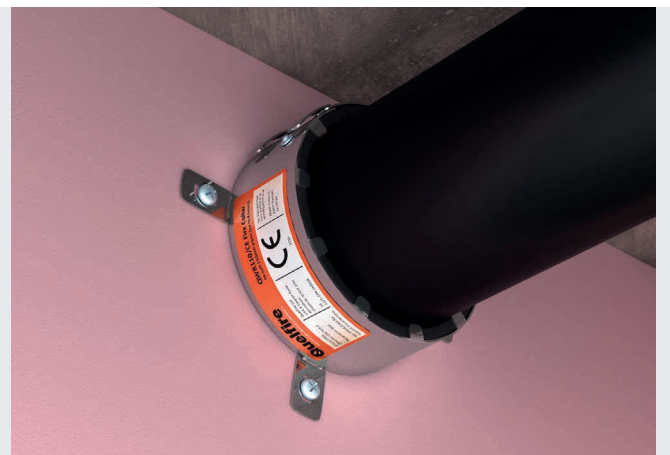
QWR CE Marked Fire Collars



QWR CE Marked Fire Collar installed on concrete floor

## FEATURES & BENEFITS

- Tested to BSEN 1366-3: 2009
- Classified according to EN 13501-2: 2007 + A1: 2009
- CE Marked
- Up to 4 hour fire rating
- Suitable for PVC, PVC-U, PE, HDPE, MDPE & PP pipes
- Available for 25-160mm pipes
- Can be retrofitted
- Performance unaffected by weathering (Type X Durability)
- Compatible with the QuelStop System - QuelStop Fire Batt & QF2 Fire Protection Compound
- Tested for use on concrete and masonry floors & walls
- Tested for use on flexible walls - fire rated partition walls
- Tested on a plasterboard ceiling/timber floor in accordance with the principles of BS EN1366-3:2009



QWR CE Marked Fire Collar installed on plasterboard wall



The Warringtonfire Logo displayed is the trademark of Warringtonfire registered in the United Kingdom. The Warringtonfire Logo is evidence that the products denoted as 'Tested by Warringtonfire' were tested to BSEN 1366-3: 2009 in England between September 22nd 2015 and January 7th 2021



This product is CE Marked.

## COMPOSITION



The QWR CE Marked Fire Collars consist of a continuous pressed stainless steel flexible shell containing high performance graphite based intumescent material which reacts under the influence of heat to exert pressure on the pipe as it softens to form a carbonaceous char which provides an effective insulation plug thus preventing fire passing through to the adjoining compartment. The QWR CE Marked Fire Collar has built in fixing lugs which are used to secure it to the structure.

## DURABILITY

Tested to Type X durability which means the QWR Fire Collars can be installed in conditions exposed to weathering.

## APPLICATION / INSTALLATION

Quelfire QWR CE Marked Fire Collars should be used where a plastic pipe penetrates a fire rated wall or floor.

-  **For vertical pipework, one unit should be installed to the underside of the floor.**
-  **For horizontal pipework one unit should be fitted to both sides of the wall.**

The surface of the wall must be clean and free of loose debris/dust and any irregularities between the QWR and the wall, and between the pipe and wall, should be filled by applying QuelStop Intumescent Acrylic Sealant.




Holes for the pipes should be drilled as close as possible to the outside diameter of the plastic pipes and are described in the “performance” table later in this document.

If the holes are drilled too large then QF2 Fire Protection Compound or QuelStop Fire Batt will be required or even an alternative system such as an Intuwrap so care and communication between trades is the key to a simple installation.

The QWR CE Marked Fire Collar should be fed around the plastic pipe, securing the ends together by passing the tongues on one end through the slots on the other end. The tongues should then be bent back and the unit secured to the structure using the correct fixings through all the lugs.

(It is not a tested solution to not use all the lugs so space should be allowed for the fixing of the QWR Fire Collar during design and installation of the pipework.)

A full set of installation details and a step by step guide are available and we recommend you check all available data before commencing installation but in principle the QWR Fire Collar can be fixed as follows:

-  **To concrete and masonry walls and floors using M8x60mm steel sleeve anchors.**
-  **To plasterboard fire rated partitions using throughbolts or M6x65mm steel hollow wall anchors (to suit the correct plasterboard thickness).**
-  **To QuelStop Fire Batt using steel pigtail screws.**



Quelfire QWR Fire Collars have also been tested generally in accordance with the BS EN 1366-3: 2009 fitted to a plasterboard ceiling/timber floor both direct to the plasterboard and also in conjunction with pattress fitted QuelStop Fire Batt.

For full details of the tested scope of application and for installation details for each scenario please contact the Quelfire Technical Team or website.

## PERFORMANCE

QWR CE Marked Fire Collars are suitable for use in concrete floors with plastic pipes including HDPE, PVC and PP in concrete floors providing up to 4 hours integrity.

They are also tested fixed to QF2 Fire Protection Compound and QuelStop Fire Batt seals providing up to 2 hours integrity.

For full details and performance information contact the Quelfire Technical Team:

Product Code	Pipe Size (mm)	Approx. space needed around pipe to fit QWR incl. fixing logs (mm)	Recommended hole diameter (mm)	QWR Length (mm)	Fire Rating
QWR25/CE	25Ø	40	27Ø	50	Up to 4 Hours
QWR32/CE	32Ø	40	34Ø	50	Up to 4 Hours
QWR40/CE	40Ø	35	42Ø	50	Up to 4 Hours
QWR50/CE	50Ø	35	52Ø	50	Up to 4 Hours
QWR55/CE	55Ø	35	57Ø	50	Up to 4 Hours
QWR63/CE	63Ø	55	65Ø	50	Up to 4 Hours
QWR75/CE	75Ø	50	77Ø	50	Up to 4 Hours
QWR82/CE	82Ø	40	84Ø	50	Up to 4 Hours
QWR90/CE	90Ø	50	92Ø	50	Up to 4 Hours
QWR110/CE	110Ø	40	112Ø	50	Up to 4 Hours
QWR125/CE	125Ø	45	132Ø	50	Up to 4 Hours
QWR160/CE	160Ø	50	162Ø	50	Up to 4 Hours
QWR55/CE/2	55Ø	35	57Ø	50	Up to 2 Hours
QWR110/CE/2	110Ø	35	112Ø	50	Up to 2 Hours
QWR125/CE/2	125Ø	45	132Ø	50	Up to 2 Hours

### Technical Support & Guidance:

Should you require any further information regarding this product, please do not hesitate to contact the technical department at Quelfire Ltd.

Tel: **0161 928 7308**. Email: [technical@quelfire.co.uk](mailto:technical@quelfire.co.uk)

Please be aware that this document is intended for general information only and all details should be checked against all relevant supporting test evidence, certification and installation guidelines.

Use of alternative components or deviations from the instructions in any way is likely to mean that the installation will not comply with the assessed rating.

Quelfire Ltd does not accept responsibility for the consequences of using Quelfire products in applications or for purposes not authorised by Quelfire Ltd. Expert advice should be sought where such applications are contemplated.

The policy of Quelfire Ltd is one of constant improvement. Details are subject to change and/or withdrawal without notification therefore you must ensure this is the latest published documentation. Whilst Quelfire will endeavour to keep its publications up to date, the accuracy of the information contained within this document may be affected by pertinent changes in the law or regulatory requirements and alterations or amendments to the specification of Quelfire products.

All information contained in this document is given in good faith and is provided for guidance only. Any drawings provided are for illustrative purposes only. As Quelfire Ltd has no control over the methods or competence of installation and of prevailing site conditions, no warranties, expressed or implied, is intended to be given as to the actual performance of the product mentioned or referred to herein and no liability whatsoever will be accepted for any loss, damage or injury arising from the use of the information given. Full terms and conditions can be accessed at: <https://quelfire.co.uk/terms-conditions-of-sale/>