
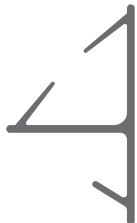



ACOUSTIC DOOR PRODUCTS
WWW.REDDIPLEX.COM/HARMONY


CONTENTS


PERIMETER SEALS


CORNER		PAGE 04
	PERIMETER GAP	3-4mm
	PROFILE LENGTH	2.1m
	FIXING TYPE	Self-adhesive
	DIMENSIONS	10x10mm 12x12mm 15x15mm
	PART NUMBER	11300 / 11301 / 11302
	COLOUR OPTIONS	● ○ ●

CORNER WITH KERF LEG		PAGE 04
	PERIMETER GAP	3-4mm
	PROFILE LENGTH	2.1m
	FIXING TYPE	Push fit
	DIMENSIONS	10x10mm 12x12mm 15x15mm
	PART NUMBER	11303 / 11304 / 11305
	COLOUR OPTIONS	● ○ ●

TRIPLE FIN WITH KERF LEG		PAGE 05
	PERIMETER GAP	3-4mm
	PROFILE LENGTH	2.1m
	FIXING TYPE	Push fit
	DIMENSIONS	11x5mm
	PART NUMBER	11306
	COLOUR OPTIONS	● ○ ●


TWIN FIN		PAGE 05
	PERIMETER GAP	3-4mm
	PROFILE LENGTH	2.1m
	FIXING TYPE	Self-adhesive
	DIMENSIONS	12x5mm
	PART NUMBER	11307
	COLOUR OPTIONS	● ○ ●


TEARDROP		PAGE 06
	PERIMETER GAP	3-4mm
	PROFILE LENGTH	50m*
	FIXING TYPE	Self-adhesive
	DIMENSIONS	12.5x5mm
	PART NUMBER	11308
	COLOUR OPTIONS	● ○ ●


TRIDENT		PAGE 06
	PERIMETER GAP	3-4mm
	PROFILE LENGTH	2.1m
	FIXING TYPE	Push fit
	DIMENSIONS	3.5x5.5mm
	PART NUMBER	11309
	COLOUR OPTIONS	● ○ ●

*Per coil

DROP DOWN SEALS

INTEGRAL DROP DOWN SEAL		PAGE 09
	DROP DOWN MAX.	20mm
	PROFILE LENGTHS	935mm / 1035mm / 1135mm
	MAX CUT DOWN	150mm
	PLUNGER TYPE	Manually adjustable
	PART NUMBER	HID935 / HID1035 / HID1135

SURFACE MOUNTED DROP DOWN SEAL		PAGE 09
	DROP DOWN MAX.	14mm
	PROFILE LENGTHS	935mm / 1035mm
	MAX CUT DOWN	150mm
	PLUNGER TYPE	Manually adjustable
	PART NUMBER	HSMD935 / HSMD1035

EUROPEAN INTEGRAL DROP DOWN SEAL		PAGE 10
	DROP DOWN MAX.	20mm
	PROFILE LENGTHS	1035mm
	MAX CUT DOWN	150mm
	PLUNGER TYPE	Manually adjustable
	PART NUMBER	HEID1035

PERIMETER SEALS INSTALLATION	07
DROP DOWN SEALS INSTALLATION	11
ACOUSTIC TESTING.....	12
G2G® FRAMELESS PARTITIONING PRODUCTS	13
FRAMED PARTITIONING PRODUCTS	14

WHY CHOOSE HARMONY?

Reducing the passage of sound should be considered when looking at the design and installation of doorsets. It is important to ensure appropriate acoustic insulation is in place to prevent noise disturbance for the intended purpose of use for the space. If the purpose of use changes, the level of acoustic insulation needs to be reassessed to suit.

Perimeter gaps around a timber door leaf are essential for the functionality of the doorset. However they present a weak point when it comes to effective acoustic sealing. The fitting of Harmony® acoustic seals minimises the sound transfer between rooms, whilst having a minimal impact on the functionality of the doorset. A reduction in acoustic interference can help improve personal wellbeing, and increase productivity and creativity.

The Harmony® range has verified acoustic performance as demonstrated in accordance with BS EN ISO 10140-2: 2010.



PERIMETER SEALS

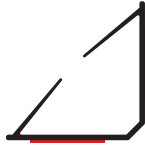


The Harmony® range of perimeter seals have been specifically designed to provide an effective barrier to seal perimeter gaps around pedestrian doorset assemblies, restricting the passage of noise, smoke and air movement. The fitting of such seals will help dramatically improve the effectiveness of the doorset assembly, in terms of noise permeation, minimising smoke and air movement.

The Harmony® range has a number of distinct characteristics:

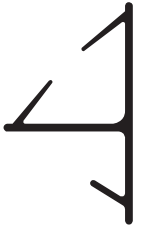
- Tested to BS EN ISO 10140-2: 2010
- Seals offer reduced closing force by design
- Excellent deflection and high memory recovery rate
- Surface mounted seals have a high performance self-adhesive backing
- Available in Black, White and Brown

CORNER



- Key benefits:** Minimal closing force, multi-point contact, can be retrofitted
- Application:** Head and jambs
- Tested to:** BS EN ISO 10140-2: 2010
- Material type:** Co-extruded PVC
- Fixing:** Self-adhesive on two faces

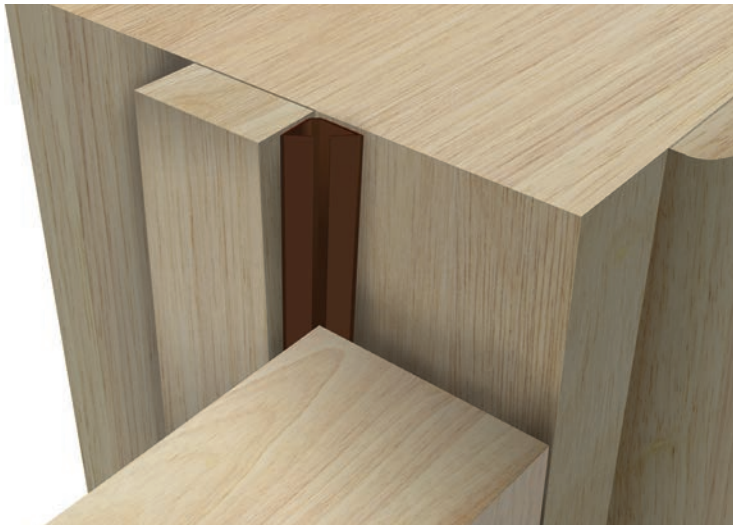
CORNER WITH KERF LEG



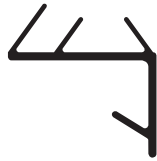
- Key benefits:** Minimal closing force, multi-point contact
- Application:** Head and jambs
- Tested to:** BS EN ISO 10140-2: 2010
- Material type:** Co-extruded PVC
- Fixing:** Push fit
- Groove width:** 2.7 - 3mm
- Groove depth:** 8mm

PRODUCT CODE	DIMENSIONS	COLOUR OPTIONS	LENGTH
11300	10 x 10mm	● ○ ●	2.1m
11301	12 x 12mm	● ○ ●	2.1m
11302	15 x 15mm	● ○ ●	2.1m

PRODUCT CODE	DIMENSIONS	COLOUR OPTIONS	LENGTH
11303	10 x 10mm	● ○ ●	2.1m
11304	12 x 12mm	● ○ ●	2.1m
11305	15 x 15mm	● ○ ●	2.1m



TRIPLE FIN WITH KERF LEG

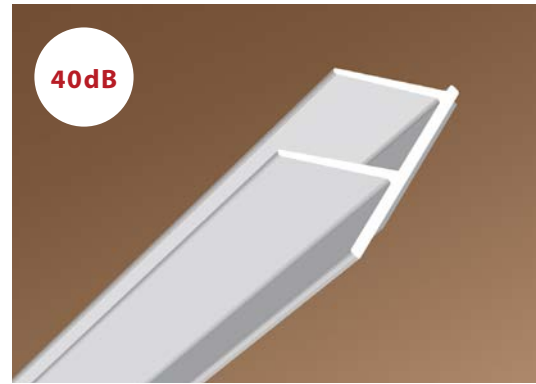


- Key benefits:** Minimal closing force, multi-point contact
- Application:** Head and jambs
- Tested to:** BS EN ISO 10140-2: 2010
- Material type:** Co-extruded PVC
- Fixing:** Push fit
- Groove width:** 2.7 - 3mm
- Groove depth:** 8mm

PRODUCT CODE	DIMENSIONS	COLOUR OPTIONS	LENGTH
11306	11 x 5mm	● ○ ●	2.1m



TWIN FIN



- Key benefits:** Minimal closing force, multi-point contact, can be retrofitted
- Application:** Head and jambs
- Tested to:** BS EN ISO 10140-2: 2010
- Material type:** Co-extruded PVC
- Fixing:** Self-adhesive

PRODUCT CODE	DIMENSIONS	COLOUR OPTIONS	LENGTH
11307	12 x 5mm	● ○ ●	2.1m



TEARDROP



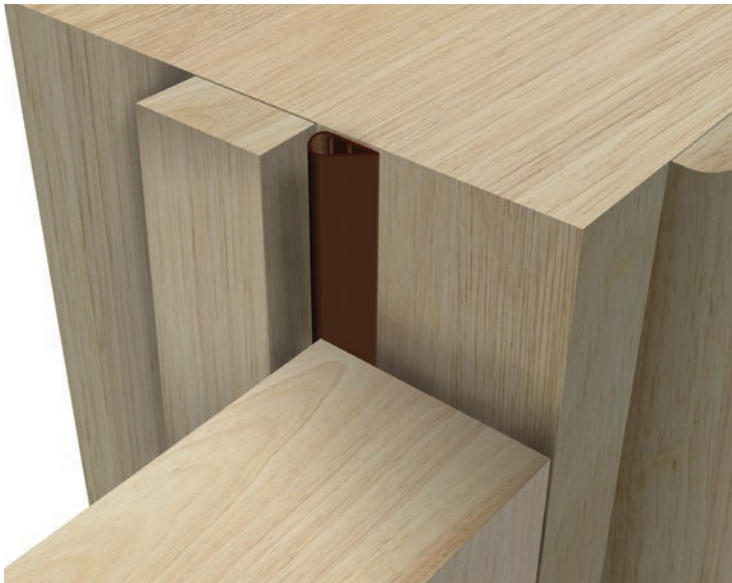
- Key benefits:** Minimal closing force, can be retrofitted
Application: Head and jambs
Tested to: BS EN ISO 10140-2: 2010
Material type: Silicone
Fixing: Self-adhesive

TRIDENT



- Key benefits:** Minimal closing force, multi-point contact
Application: Can be used as a perimeter or threshold seal
Tested to: BS EN ISO 10140-2: 2010
Material type: Co-extruded PVC
Fixing: Push fit
Groove width: 2.7 - 3mm
Groove depth: 8mm

PRODUCT CODE	DIMENSIONS	COLOUR OPTIONS	LENGTH
11308	12.5 x 5mm	● ○ ●	50m

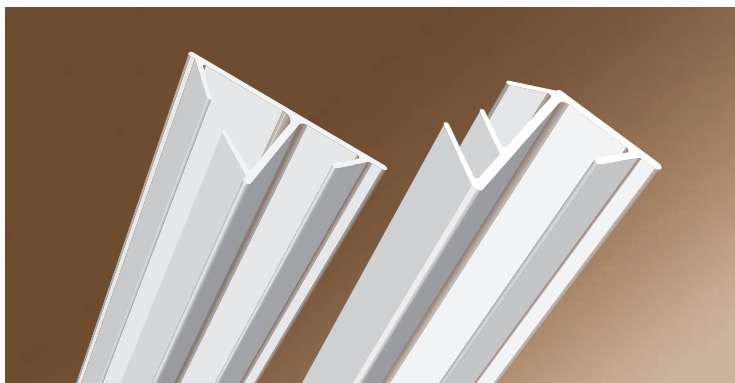


PRODUCT CODE	DIMENSIONS	COLOUR OPTIONS	LENGTH
11309	3.5 x 5.5mm	● ○ ●	2.1m



PERIMETER SEALS INSTALLATION

Push Fit Seals



The product must be installed to allow the proper opening and closing of the door assembly with a minimal amount of force. The door assembly should be checked periodically to ensure proper operation. The product has been designed to provide an effective acoustic seal in the gap around a perimeter of a pedestrian doorset assembly.

Tools required:

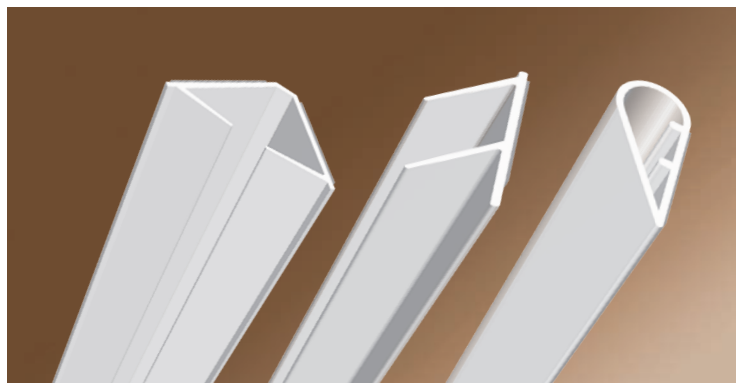
Tape measure, pencil or marker, scissors, knife or snips.

1. The door frame should be prepared prior to fitment using a standard kerf saw cut of 3mm wide by 8mm deep, ensure the groove is clean and dust free.
2. Measure the frame at the top and both sides.
3. Cut the product to fit using a knife or scissors, mitring top corners.
4. Insert product leg (stick) into the grooved part of the frame, gently apply an even pressure along the full length of the seal, ensuring that the seal is positioned correctly in the groove.

Excessive pressure used during the application could potentially delaminate the flippers from the main body of the component.

5. Do not install this product to impede the opening and closing of the door assembly.
6. The door assembly must operate effectively.

Adhesive Seals



The product must be installed to allow the proper opening and closing of the door assembly with a minimal amount of force. The door assembly should be checked periodically to ensure proper operation. The product has been designed to provide an effective acoustic seal in the gap around a perimeter of a pedestrian doorset assembly.

1. The frame needs to be clean and free from any dust particles.
2. Avoid applying the seal to newly decorated surfaces.
3. Peel release the liner adhesive back by approximately 150mm from the product, exposing the back of the adhesive.
4. Position the seal in the top corner and gently apply an even pressure to the seal.
5. Gradually remove the release liner from along the full length of the seal, ensuring that the seal is positioned correctly against the rebate and the main frame section.
Excessive pressure used during the application could potentially delaminate the flippers from the main body of the component.
6. Dispose of the release liner using the appropriate method.

DROP DOWN SEALS



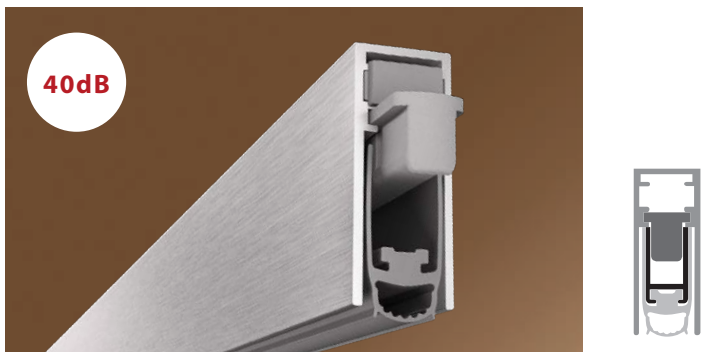
To ensure adequate acoustic sealing and to minimise the closing force, it is necessary to install automatic drop down seals at the threshold of the doorset. These can be either surface mounted or rebated in the door leaf.

The Harmony® range of Integral Drop Down Seals offer effective acoustic control in timber door cores.

- Tested to BS EN ISO 10140-2: 2010
- Available in a range of cut lengths
- Manually adjustable plungers
- Can be cut back by 150mm [max.]
- Even and controlled drop across threshold

Harmony® Surface Mounted Drop Down Seals are ideal for updating existing timber doors to create an effective acoustic seal at the threshold of the door. With a Silver anodised cover, this product offers both aesthetic and functional appeal.

INTEGRAL DROP DOWN SEAL



Key benefits: Non-handed, easy to install, can be cut down, available in a range of lengths

Application: Timber doors

Tested to: BS EN ISO 10140-2: 2010

Cut down: 150mm

Maximum drop: 20mm

Groove width: 14mm

Groove depth: 35mm

Plunger type: Manually adjustable

Seal type: Grey bubble

PRODUCT CODE	LENGTH	PACK QUANTITY
HID935	935mm	5
HID1035	1035mm	5
HID1135	1135mm	5



Additional lengths available subject to MOQ

SURFACE MOUNTED DROP DOWN SEAL



Key benefits: Non-handed, supplied with end caps to allow plunger to be mounted on left or right side

Application: Timber doors

Tested to: BS EN ISO 10140-2: 2010

Cut down: 150mm

Maximum drop: 14mm

Plunger type: Manually adjustable

Seal type: Grey bubble

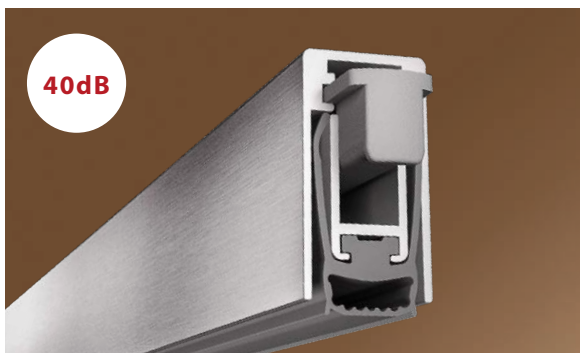
Surface finish: Silver anodised

PRODUCT CODE	LENGTH	PACK QUANTITY
HSMD935	935mm	5
HSMD1035	1035mm	5



Additional lengths available subject to MOQ

EUROPEAN INTEGRAL DROP DOWN SEAL



- Key benefits:** Minimal closing force
Application: Timber / Composite doors
Tested to: BS EN ISO 10140-2: 2010
Cut down: 150mm
Maximum drop: 20mm
Groove width: 15mm
Groove depth: 30mm
Plunger type: Manually adjustable
Seal type: Grey bubble

PRODUCT CODE	LENGTH	PACK QUANTITY
HEID1035	1035mm	5



Additional lengths available subject to MOQ

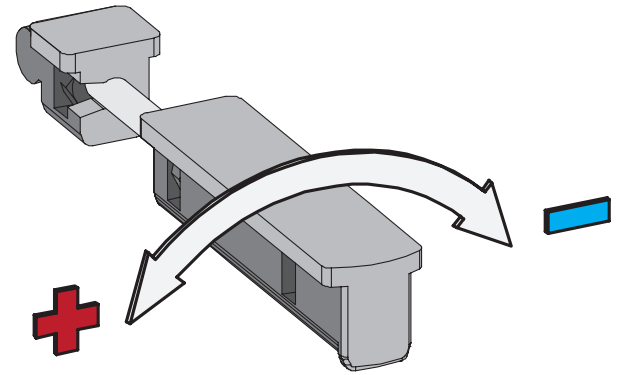
DROP DOWN SEALS INSTALLATION

Harmony® Drop Down Seals have been designed to provide the best acoustic performance whilst offering ease of installation on site. The drop down seals form an effective barrier to seal threshold gaps in pedestrian doorset assemblies and restrict the passage of noise, smoke and air movement.

ACTUATOR (PLUNGER)

The Harmony® actuator is a unique patented design, manufactured from high performance glass filled nylon. The plunger has two distinct features, it is easily retractable and fully adjustable without the need for mechanical tools - it is quick and efficient. The actuator is provided with a radius end condition with a large invasive contact area, thereby negating the need for any additional surface contact points.

- Glass filled nylon, hardwearing and durable
- Can be easily replaced if damaged, negating the need to replace the complete component
- Aesthetic design, easily adjustable “click-it” fit system (no springs)



TRIMMING GUIDE

The recommended maximum cut down is 150mm from the opposite end to the plunger.

PART CODE	PRODUCT DESCRIPTION	LENGTH SUPPLIED	MAX CUT DOWN	MINIMUM LENGTH AFTER TRIMMING
HID935	Harmony® Integral Drop Down	935mm	150mm	785mm
HID1035	Harmony® Integral Drop Down	1035mm	150mm	885mm
HID1135	Harmony® Integral Drop Down	1135mm	150mm	985mm
HSMD935	Harmony® Surface Mounted Drop Down	935mm	150mm	785mm
HSMD1035	Harmony® Surface Mounted Drop Down	1035mm	150mm	885mm
HEID1035	Harmony® European Integral Drop Down	1035mm	150mm	885mm

ACOUSTIC TESTING



The Harmony® range of Acoustic Door Products have been tested with leading core providers covering graduated density chipboard, tri-laminated door cores.

We offer acoustic configurations for single action single door sets, covering door core thicknesses of 44mm and 54mm.

Our commitment to product testing and development means that all our products are tested at UKAS accredited test houses.

The Harmony® range demonstrates compliance with Approved Document E and Building Bulletin 93 and offers effective performance in a chosen range of timber doors in accordance with BS EN ISO 10140-2: 2010.



FRAMELESS PARTITIONING PRODUCTS

The G2G Glass Dry Joints Range perfectly complements the Harmony® Acoustic Range.

The G2G range provides the ideal solution for joining low profile slimline internal glass partitions, giving a clear finish with reduced installation time and costs. Clear and Black profile options are available as standard.

Find out more at www.reddiplex.com/G2G

'I' Joint

'H' Section

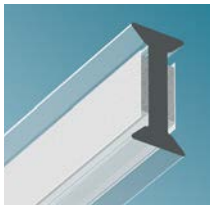
Abutment Joint

Square Corner Joint

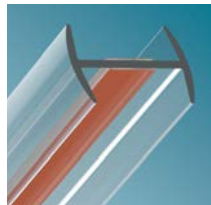
Flexible 'I' Joint

Minimal Corner Joint

135° Connection Joint



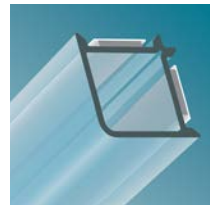
3-Way Joint



90° Corner Protection Joint



Side Seal



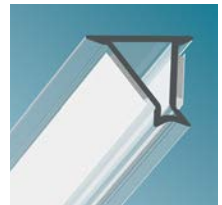
Top & Bottom Seal



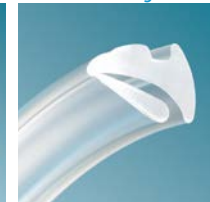
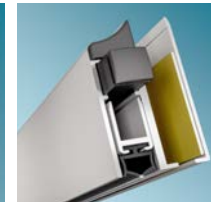
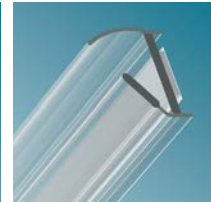
Glass Dropdown Door Seal



Single Glazed Frameless Wedge



G2G® Banded Glazing Strip





FRAMED PARTITIONING PRODUCTS

The Reddiplex® Framed Partitioning Range complements the Harmony® Acoustic Range.

The range provides solutions for use in framing sections. Single, offset and double glazing sections are available, providing options to suit both design and cost restraints.

Find out more at www.reddiplex.com/framed

Single Glazed Chair & Bead



Corner Clip

Single Glazed Offset Chair & Bead



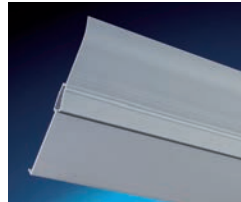
Clip-on Angle

Double Glazed Chair & Bead



Covertrim

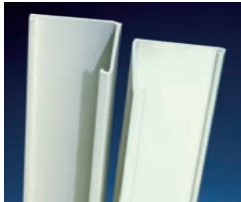
Concealed Fixed Skirting



G2G® Banded Glazing Strip



Dropdown Door Seal





Reddiplex Limited

The Furlong • Droitwich • Worcestershire WR9 9BG • United Kingdom
[t] +44 [0]1905 795432 • [f] +44 [0]1905 796662 • [e] sales@reddiplex.com • www.reddiplex.com