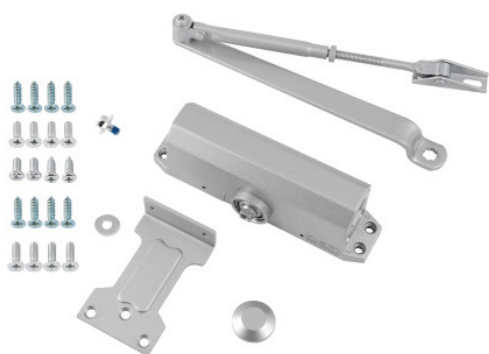


Eclipse Size 3 Overhead Door Closer



Technical Information

- CE 1121, UKCA 2812, CF10041 Certifire
- BS EN1154 Performance Tested
- Fixed Power Size 3 - 60kg
- Tested to 500,000 Opening Cycles
- BS EN1634 Fire Tested
- FD 30, 60, 90, 120 Minute Timber
- FIG 1 - Pull Side (180° Maximum Opening)
- FIG 6 - Push Side (170° Maximum Opening)
- Tested to Operating Temperatures of -15°C to 40°C
- 10 Year Mechanical Guarantee
- Parallel Arm Bracket Supplied
- Adjustable Closing
- Adjustable Latching



FIG 1

4	8	3	1	1	3
---	---	---	---	---	---

FIG 6

3	8	3	1	1	3
---	---	---	---	---	---

Ref	Size	Qty	Finish
28734	3	1 Set	SLV